



erwin Data Modeler

Release Notes

Release 15.0

Legal Notices

This Documentation, which includes embedded help systems and electronically distributed materials (hereinafter referred to as the “Documentation”), is for your informational purposes only and is subject to change or withdrawal by Quest Software, Inc and/or its affiliates at any time. This Documentation is proprietary information of Quest Software, Inc and/or its affiliates and may not be copied, transferred, reproduced, disclosed, modified or duplicated, in whole or in part, without the prior written consent of Quest Software, Inc and/or its affiliates

If you are a licensed user of the software product(s) addressed in the Documentation, you may print or otherwise make available a reasonable number of copies of the Documentation for internal use by you and your employees in connection with that software, provided that all Quest Software, Inc and/or its affiliates copyright notices and legends are affixed to each reproduced copy.

The right to print or otherwise make available copies of the Documentation is limited to the period during which the applicable license for such software remains in full force and effect. Should the license terminate for any reason, it is your responsibility to certify in writing to Quest Software, Inc and/or its affiliates that all copies and partial copies of the Documentation have been returned to Quest Software, Inc and/or its affiliates or destroyed.

TO THE EXTENT PERMITTED BY APPLICABLE LAW, QUEST SOFTWARE, INC. PROVIDES THIS DOCUMENTATION “AS IS” WITHOUT WARRANTY OF ANY KIND, INCLUDING WITHOUT LIMITATION, ANY IMPLIED WARRANTIES OF MERCHANTABILITY, FITNESS FOR A PARTICULAR PURPOSE, OR NONINFRINGEMENT. IN NO EVENT WILL QUEST SOFTWARE, INC. BE LIABLE TO YOU OR ANY THIRD PARTY FOR ANY LOSS OR DAMAGE, DIRECT OR INDIRECT, FROM THE USE OF THIS DOCUMENTATION, INCLUDING WITHOUT LIMITATION, LOST PROFITS, LOST INVESTMENT, BUSINESS INTERRUPTION, GOODWILL, OR LOST DATA, EVEN IF QUEST SOFTWARE, INC. IS EXPRESSLY ADVISED IN ADVANCE OF THE POSSIBILITY OF SUCH LOSS OR DAMAGE.

The use of any software product referenced in the Documentation is governed by the applicable license agreement and such license agreement is not modified in any way by the terms of this notice.

The manufacturer of this Documentation is Quest Software, Inc and/or its affiliates.

Provided with “Restricted Rights.” Use, duplication or disclosure by the United States Government is subject to the restrictions set forth in FAR Sections 12.212, 52.227-14, and 52.227-19(c) (1) - (2) and DFARS Section 252.227-7014(b)(3), as applicable, or their successors.

Copyright © 2025 Quest Software, Inc and/or its affiliates All rights reserved. All trademarks, trade names, service marks, and logos referenced herein belong to their respective companies.

Contact erwin

Understanding your Support

Review [support maintenance programs and offerings](#).

Registering for Support

Access the [erwin support](#) site and register for product support.

Accessing Technical Support

For your convenience, erwin provides easy access to "One Stop" support for all editions of [erwin Data Modeler](#), and includes the following:

- Online and telephone contact information for technical assistance and customer services
- Information about user communities and forums
- Product and documentation downloads
- erwin Support policies and guidelines
- Other helpful resources appropriate for your product

For information about other erwin products, visit [erwin by Quest Products page](#).

Provide Feedback

If you have comments or questions, or feedback about erwin product documentation, you can send a message to techpubs@erwin.com.

News and Events

Visit [News and Events](#) to get up-to-date news, announcements, and events. View video demos and read up on customer success stories and articles by industry experts.

Contents

erwin Data Modeler Editions	11
Standard Edition	12
Workgroup Edition	13
Navigator Edition	15
Lite Edition	15
Sample Model	17
New Features and Enhancements	19
Orchestration Integration with Jira	19
OpenAPI Specification Models	19
erwin DM-erwin DI Logical Names Mapping	20
DBT Integration	20
Snowflake Enhancements	20
JSON Enhancements	21
Google BigQuery Enhancements	22
PostgreSQL Enhancements	22
Productivity and UI Enhancements	22
erwin Mart Portal	23
erwin ER360	23
Third Party Tools	24
Prerequisites	25
Release Numbering Scheme in erwin Data Modeler	26
System Requirements	27
erwin DM	27

erwin Mart Portal	28
Administrative Privileges	34
Supported Target Databases	35
Limitations in Hive	38
erwin Data Modeler Workgroup Edition Requirements	39
Administrator Server System Requirements	40
DBMS Requirements	41
Client Workstation Requirements	42
erwin Data Modeler Navigator Edition Requirements	43
Support for erwin Data Modeler Navigator Edition	44
Installation Considerations for erwin Data Modeler Workgroup Edition	45
erwin Data Modeler and Mart Release Numbers	46
Microsoft SQL Server 2005 onward Permissions	47
Specify Use of Foreign Characters With Microsoft SQL Server	48
Installation Considerations for erwin Data Modeler Navigator Edition	49
Silent Install	50
General Considerations for Using erwin Data Modeler Workgroup Edition	51
Model Display in the Difference Reconciliation Dialog	52
Uninstalling erwin Data Modeler Workgroup Edition	53
General Considerations for Using erwin Data Modeler Navigator Edition	54
Model Display in the Difference Reconciliation Dialog	55
Help Files	56
Known Issues	57
Windows	57
macOS	66
NoSQL- Nested Structure Models-Harvesting to erwin Web Portal is not Supported	69

erwin Mart - Cassandra: Exporting Cassandra Model into DI displays the Column Definition Value in Column Comments	70
FE: The Thick Option is not Saved in the Preview	71
erwin Mart - Azure SQL: The Settings and DI Configuration Tabs do not Display Password	72
MySQL RE- Column Format and Memory Storage Options are not Retrieved	73
Switching JDBC Connections from one Target DBMS to Other Produces Error	74
Azure Synapse REDB: View or Materialized View with Same Name and Different Schemas REDB Produces Unexpected Results	75
UI: erwin DM Crashes on Creating an Object with Max Length and Deleting	76
FE Options Selected in Custom Option Set are not Retained	77
RedShift FE - Few functions do not execute from erwin DM FE Wizard	78
Redshift REC - Comments are Truncated at 65536 Characters	79
Redshift REC - Properties of Library Object are not Retrieved	80
RedShift REC-Column Values need to Follow the Exact Order According to Partition Specification	81
Redshift REC - Performance is Slow in Redshift for REDB Process	82
Db2 z/OS-ESX-1015,190110 Messages are Displayed on Copy-pasting a Table that has a Period Clause	83
NSM P to L: Derive PO model to LO with NSM Template attached	84
erwin Data Modeler cannot Connect to erwin Mart Portal on Host Machine	85
API-Related Features do not Work on a Windows 2008 R2 SP1 Machine	86
Netezza REC- Comments are Truncated at 1024 Characters	87
SQL 1105 Error	88
Model and Version Name Limit on Oracle	89
.Net Requirement	90
Report on Glossary Words Includes Extra Characters	91
Updating Profile Description from Notepad	92

Unwanted Result Rows in Report	93
DSM Logical to SQL Server 2012	94
Report Designer Functions for a Large Model	95
Incorrect UDP in UDP Report	96
Invalid Column Node for Db2 LUW Model in View Report	97
Mart Portal Name in Korean	98
Generating Reports with Korean Characters in User Name	99
Error While Creating a Profile Using Special Characters in Mart Portal	100
File IO: For a Parent or Child Table with Multiple Child Tables, Other Child FK Attributes are Highlighted on Mouse Hover on One Relationship	101
Owner Name not Displayed while Sorting a Guided Editor's list of Objects	102
Google BigQuery - Row Access Policies are not retrieved after REDB	103
Oracle: Alter script is not generated for columns in a Materialized View	104
Oracle: Alter script is not generated for columns in a View	105
Oracle: Alter script is not generated and comments are deleted for Materialized Views ..	106
Oracle: Views and Materialized Views disappears from the ER diagram	107
Oracle: Alter script is not generated and comments are deleted for Views	108
Snowflake: Views with certain Syntax are not Reverse Engineered	109
Snowflake REDB: Performance Degradation when selecting Tag object during REDB ..	110
Snowflake REDB: Errors are displayed when the database contains more than 10,000 tables	111
MariaDB REDB: Error is displayed while connecting database through JDBC	112
Couchbase Cloud Limitations: Full Text Indexes, Buckets, View, and User Objects are not completely supported	113
DM Connect for DI: Valid values are not exported, if the name exceeds 200 characters ..	114
Teradata 17.x REDB: 'With Check' property of Tables are not retrieved in the Relationship Editor	115

Teradata 14.10, 15.x/16.x: REDB with JDBC Connection Issues	116
Teradata 17.x: Procedure and Function displays Syntax error during REDB	117
MySQL REDB: Reverse Engineering different Schemas display Views with the same Table name	118
Duplicate Triggers are created when you reopen .XML model	119
Alter script is not generated in the Alter Script wizard, when an User Defined View is renamed/modified	120
PsotgreSQL/AlloyDB 1.1: Duplicate Inherited Tables are retrieved after REDB	121
Report Designer displays Data Vault objects and properties under the Database for a Logical report type	122
Copy-Paste: Renamed column name is migrated as role named column when you copy paste in the PO model	123
Model Checkout: Opening a checked out model in Mart displays Read Only error	124
Denorm:Data loss (Tables are missing) when Denormalize the Parent and child having multi relationships in bidirectional or circular	124
Search Index:REC-Search Index properties are not retrieving from DSE Cassandra database while REC	124
Avro: Norm-De norm: FE: FE script for record containing the array of objects type is syntactically incorrect.	124
Denorm-CC: Objects are not exported properly from MongoDB model to RDBMS mod- els	124
MITI-JSON models are not Exporting and Importing with MITI bridges	125
Reporting:Oracle: 'Java' Object displaying in the Report designer for oracle database but its not a valid object	125
Korean OS: Korean JSON format file is not opening in Korean OS	125
PostgreSQL 16.x:RES: INDEX: No Syntax error is throwing while performing RES, Index method spgist ASC/DESC options should not set at UI	125
JSON:Logical/Physical: The specific Netezza REDB model that is attached is not being obtained as intended on the logical/physical side after being derived to JSON	125
PostgreSQL 16.x:RES: Function: Syntax errors while RE from the script	126

r14.0::PostgreSQL 16.x:REDB: Procedure: SQL body is not retrieving after REDB	126
PostgreSQL 16.x:Alter:Materialized View:No schema generated after removing the Storage parameters	126
PostgreSQL 16.x:Alter: Tablespace: Script not generated in the alter preview, after removing the tablespace options	126
When we open the previous version Models the DV Object Attributes not setting any Domain parent and Data Type	126
JSON: Some garbage and extra characters are coming after save as model in JSON format and reopen	126
DB2 for Zos 13: For Db2 for Zos Certification in create Model, DL, Target DB change, CC and Reporting /13 should be added	127
JSON_SaveAs:GBQ:Select statement missing for template_code option in Function\Procedure object	127
Snowflake:REC: A database object is retrieved more times while REDB	127
JSON: While Saving and Opening the JSON model, a Progress bar with a color or percentage indication should be displayed	127
JSON: New line characters are displaying when we save the model into JSON format and then compare with original model	127
JSON: Foreign Key Constraint Name is retrieved extra in the JSON model when compared with erwin base model	128
JSON: Extra Underscore () is retrieved for Model Shapes and Auto Attached objects in the JSON model when compared with erwin base model	128
JSON: Extra Backslash is retrieved for Quoted words and Spaces are not generated in Comments in the JSON model when compared with erwin base model	128
JSON: Disk Volumes ("*) are not retrieved for storage groups in the JSON model when compared with erwin base model	128
JSON: Comments are retrieved extra for Domains, and Table Column Comments in the JSON model when compared with erwin base model	128
JSON: Column Headings are not retrieved in the NSM CSV file in the JSON model when compared with erwin base model	129
JSON: Bend Points are not retrieved for Model Shapes in the JSON model when compared with erwin base model	129

JSON : Opening the JSON file is taking time	129
Azure DevOps: When Unselecting the "Auto Append" checkbox in the "Commit to Git" dialog, The Alter script file is not replaced in the Local path	129
Azure Devops: The "Username" and "Password" fields should be disabled or removed for Azure Devops connection in the "Git Connection Manager" dialog	130
Azure Devops: Should not be able to place a Cursor in the Greyed out fields i.e., "Git Repository" and "Git Branch" in the 'Commit to Git' wizard	130
Azure Devops: Proper Tooltip should be displayed when the mouse hovers over the "Git Connections" icon	130
Azure Devops: FE script is not Overwritten properly in the Local path while trying to save the two different DB FE scripts in one file	130
PostgreSQL 16.x : RES : TABLE: Not throwing any syntax error while performing RES with OIDS = TRUE	130
Azure Devops: When Providing Backslash or without Slash in the "Git Path" field, the Git Path name is appended to the File name, and the File is not saved in the Azure Devops	131
SQL Server:UI: When we derive the Logical only emovies model to SQL Server. One extra column is added on the physical side of the model.	131
PostgreSQL REC The erwin DM application is crashing while performing REC with Materialized View for Automation Database	131
Fixed Issues	132
Third Party Software Acknowledgment	135

erwin Data Modeler Editions

The following editions of erwin DM are available:

- [Standard Edition](#)
- [Workgroup Edition](#)
- [Navigator Edition](#)
- [Lite Edition](#)

The features of erwin DM that are available to you depend on the edition that you are using. For more information about the differences between versions, click one of the Edition links.

Academic Edition has been discontinued effective immediately. For trial, you can use the Standard Trial Edition.

Standard Edition

erwin Data Modeler Standard Edition provides all the data modeling features used by Data Architects, Data Administrators, and Application Administrators, but does not include any workgroup modeling capabilities. When you enable data movement or dimensional modeling features, it provides a tool for assisting Data Administrators and Capacity Managers design data warehouses. Partners can use the API to create add-on solutions to erwin Data Modeler.

Workgroup Edition

erwin Data Modeler Workgroup Edition provides all the data modeling features used by Data Architects and also includes workgroup modeling capabilities used by Database Administrators, Application Administrators, and Application Owners. It provides conflict resolution, versioning, security and standardization for multi-user modeling. Workgroup modeling operates in a client/server environment so processing is shared between the user client workstation and the server where the models are stored. Users access the stored models through a client, such as erwin Data Modeler. Models are held in a platform and network independent database or mart that resides on a central server, using Microsoft SQL Server, Oracle, or PostgreSQL as the host database.

The key features of erwin Data Modeler Workgroup Edition include:

Web-based administrator (erwin Mart Portal)

Helps the administrator administer the Mart. The administrator creates the Mart database, installs and configures erwin Mart Portal before users can connect to the Mart. erwin Mart Portal is hosted on a web server and is accessed through an Internet browser.

Model change impact analysis

Provides a change summary showing the impact of changes and the history of the affected model objects, allowing you to select which changes to apply to the model repository.

Version management

Lets Data Architects store, access and analyze the history of a model and the changes made to it, lock down specific versions, run difference reports between versions, and seamlessly roll back models to previous states as required.

Concurrent model access with optional model locking

Allows multiple users to concurrently work on a given model without compromising the integration and integrity of their parallel efforts.

The administrator installs the program and initializes the database on the DBMS server. The administrator also has the responsibility of setting up the library structure in which models are organized, and assigning security profiles to users. Administration overhead is relatively low and proportional to the number and activity level of the users. After a model is saved to the database, control of who can work on the model and how changes are saved to the model is handled by security, making it possible for workgroups to work on large models without confusion. erwin Data Modeler Workgroup Edition supports many security and administrative features related to its multiuser capabilities and the client/server environment in which it operates. For this reason, routine management is usually performed by a dedicated administrator. Administrators can find detailed

Workgroup Edition

information regarding their tasks and responsibilities in the erwin Data Modeler Workgroup Edition Administration Guide.

You can also use erwin Data Modeler Navigator Edition as a client. Read-only access is permitted to data models, so your workgroup can use this client to share information with others without the risk that unauthorized changes might be saved to the mart.

Navigator Edition

erwin Data Modeler Navigator Edition provides a cost-effective way to provide read-only access to models built with erwin Data Modeler for viewing and analysis. This edition does not permit you to make any changes to models.

The key features of erwin Data Modeler Navigator Edition include:

Read-only access

Read-only access is provided to models created by erwin Data Modeler and it can also be used as a Workgroup Edition client for viewing a data model stored in a mart. Use the Navigator Edition to easily share model information without the risk of unauthorized changes to a model.

Navigation and Viewing

Provides those who need to view models, but not update them, full navigation and viewing of data models.

Reporting and Publication

Offers reporting and printing capabilities that generate in a variety of formats, including HTML and PDF.

Lite Edition

erwin Data Modeler Lite Edition is a part of TOAD for Oracle bundle. With this edition, database developers and administrators, programmers, and data analysts can create and manage Oracle-based data models. For more information about erwin DM Lite Edition, refer to the [Working with erwin Data Modeler Lite Edition](#) topic.

Only Oracle database and versions 18c, 19c, and 21c are compatible with the erwin DM Lite Edition.

The key features of erwin DM Lite Edition include:

Reverse Engineering Models

You can reverse engineer a data model from an Oracle database or script using the Reverse Engineering feature. During reverse engineering, you can select database objects

that you want to include in models.

Forward Engineering Models

You can generate database schema or alter script using the Forward Engineering feature. This feature supports schema generation for the objects in the Oracle database that you can use to forward engineer them to the database.

Creating and Accessing Models

You can create new Oracle models and open existing Oracle models for data modeling.

Sample Model

When you install erwin® Data Modeler, two sample models, eMovies and PublicationSystemSample are installed. Use these models as examples to learn data modeling and to learn how to use the tool.

These models are available in the following folder:

```
<install folder>\erwin\Data Modeler r9\BackupFiles\Samples\Standard
```

If you access the sample model from the install folder, you must run the data modeling tool as an administrator to open the eMovies model.

eMovies

The business requirements of this model are as follows:

- Manage employee details
- Manage store details
- Manage movie details
- Manage copies of movies
- Manage customer details
- Maintain movie rental details for customers
- Record payment details for rented movies
- Display the credit status of customers
- Generate invoices for customers
- Display overdue details for customers
- Search for customers
- Search for movies that are rented based on the rented date, customer phone number, employee number, or movie number

Apart from entities, attributes, and relationships, this model serves as an example for the following features:

- Domains
- Logical Model

Sample Model

- Subject Area
- Annotation
- Key Groups
- ER Diagrams
- Naming Standards Object
- Data Type Standards Object
- Themes
- Validation Rules

PublicationSystemSample

The PublicationSystemSample model provides an example of a book publication company.

The business requirements of this model are as follows:

- Diagrams
The Diagrams can be easily shared with other project team members by exporting them to .EMF format during project analysis. The diagrams also support project communication using the Report Designer and different diagram presentation options while viewing models in the erwin Web Portal.
- Documentation
This object serves as an example for the following features:
 - Model
 - Diagram
 - Subject Area
 - Entity
 - Attribute
- Theme override options
- Diagram Annotations

New Features and Enhancements

Following new features and enhancements are available in erwin Data Modeler (erwin DM), erwin Mart Portal, and erwin ER360.

- [Orchestration Integration with Jira](#)
- [OpenAPI Specification Models](#)
- [erwin DM-erwin DI Logical Names Mapping](#)
- [DBT Integration](#)
- [Snowflake Enhancements](#)
- [JSON Enhancements](#)
- [Google BigQuery Enhancements](#)
- [PostgreSQL Enhancements](#)
- [Productivity and UI Enhancements](#)
- [erwin Mart Portal](#)
- [erwin ER360](#)
- [Third Party Tools](#)

The following sections walk you through a brief description of these features and wherever relevant, a reference to more information.

Orchestration Integration with Jira

erwin DM introduces Jira integration to streamline collaboration between business users and data modelers. You can now link Jira tickets ID to models, harvest them to erwin ER360, and automatically sync ticket details, comments, and status updates without switching between applications.

For more information, refer to the [Integrating Jira with erwin DM](#) topic.

OpenAPI Specification Models

You can now create and manage OpenAPI specifications using a model-driven, diagram-based approach in erwin DM. This enables API developers to design OpenAPI specifications like data models with a familiar modeling environment. This ensures:

New Features and Enhancements

- Consistency between data structures and API definitions
- Reduced duplication by reusing existing data models
- Improved collaboration and communication via visual API representation

You can create physical OpenAPI models using predefined OpenAPI components and then build on top of it. These models support reverse engineering and forward engineering via specifications in JSON and YAML formats.

For more information, refer to the [OpenAPI](#) topic.

erwin DM-erwin DI Logical Names Mapping

You can now map logical names from erwin DM to business terms in the Business Glossary Manager in erwin DI. This offers several benefits:

- Strengthens data governance by ensuring consistent terminology usage
- Reduces time spent linking business terms to data model elements
- Creates a stronger alignment between business glossaries and technical models
- Improves model documentation and knowledge transfer
- Enhances discovery and semantic understanding

For more information, refer to the [Scenario: Export Logical Names](#) topic.

DBT Integration

erwin DM now supports integration with Data Build Tool (DBT), enabling you to export data model metadata in YAML format. This feature allows you to select models from the Mart and generate DBT-compatible YAML files.

For more information, refer to the [DBT Integration](#) topic.

Snowflake Enhancements

Several enhancements have been introduced to Snowflake models as follows:

- **Object Support:** The following snowflake objects are now supported:
 - Masking Policy
 - Row Access Policy

New Features and Enhancements

- Iceberg Table
- Dynamic Iceberg Table
- Hybrid Table
- Hybrid Table As Select
- Table Index

For more information, refer to the [Snowflake Support Summary](#) topic.

- **Index Support for Hybrid Tables:** You can now create Unique and Non-Unique Indexes for Hybrid Tables. For more information, refer to the [Create a Unique or Non-Unique Index](#) topic.
- **Use OR ALTER option in Forward Engineering:** The Use OR ALTER option has been added to the Forward Engineering Wizard. This enhancement improves script generation by giving you control over how existing database objects are handled.
- **Enhanced Column and Constraint Handling for Iceberg Tables:** Snowflake Iceberg Table syntax is supported more accurately now:
 - Includes available column metadata during reverse engineering
 - Excludes column definitions during forward engineering for catalog types that do not support column declarations in the CREATE TABLE statement. For example, AWS Glue.
 - Disables ALTER PK, ALTER FK, and ALTER AK options by default, as Iceberg Tables do not support constraint additions via ALTER TABLE
 - Generates constraints within the CREATE TABLE statement

JSON Enhancements

Several enhancements have been made to JSON modeling as follows:

- **User-defined Properties in Forward Engineering:** You can now include user-defined properties in forward engineering.

For more information, refer to the [Forward Engineering Options for JSON](#) topic.

- **Definition for JSON Fields:** You can now create a list of reusable definitions using the pre-defined keyword, \$Defs. These definitions can then be assigned to fields within the object in which they are created, or to fields in other objects, depending on the definition type.

For more information, refer to the [JSON Support Summary](#) topic.

- **Array Object Type:** JSON models now support the Array type for objects.

Google BigQuery Enhancements

Several enhancements have been made to Google BigQuery modeling as follows:

- **Primary Key Type:** Google BigQuery models now support the PK (primary key) type and display it in the Index Editor. Earlier, primary key was available only in the Column Editor. The information is synchronized between the both editors.

For more information, refer to the [Defining Google BigQuery Table Indexes](#) topic.

- **Comprehensive Column Sorting:** To help you organize and analyze your data, the Sort feature in the Google BigQuery Column Editor now lets you sort columns in six ways: Alphabetic, Reverse Alphabetic, Column Alphabetic, Column Reverse Alphabetic, Column Order, and Physical Order.

For more information, refer to the [Table Column Editor](#) topic.

PostgreSQL Enhancements

Several enhancements have been introduced to PostgreSQL models as follows:

- **Enhanced Permission Selection:** Permissions are supported for Databases, Functions, Procedures, Tables, Columns, Tablespaces, and UDPs. For more information, refer to the [PostgreSQL Support Summary](#) topic.
- **Procedure Permission Support:** Added support for assigning permissions to Procedure object. For more information, refer to the [Defining PostgreSQL Procedure Permissions](#) topic.

Productivity and UI Enhancements

Several additions and enhancements have been implemented to improve erwin DM's productivity and usage experience. These enhancements are:

- **Expanded Support for Snowflake Table Types:** erwin DM 15.0 introduces new table types and corresponding property tabs for each table type within the Table Editor.
- **JSON Field Editor Property:** JSON Field Editor now has the Is Pattern Properties checkbox. When selected, this specifies that the selected field contains pattern properties for the regular expression and schema that validates an additional property.

New Features and Enhancements

- **ER Diagram Property:** The Physical Order option for the Physical Display Level in the ER Diagram Editor is now available only for SQL databases and Google BigQuery. It is no longer available for other NoSQL databases.
- **PostgreSQL Permission Editor:** erwin DM introduces new icons such as Sort Items, Select All, Select None, Toggle Selection along with All and All Except options in the PostgreSQL Permission Editor to streamline bulk permission assignments.
- **Upgraded CDM Models:** CDM models have been upgraded to ensure compatibility with new features and improved performance.

For more information about the UI enhancements, refer to the [Productivity and UI Enhancements](#) topic.

erwin Mart Portal

erwin Mart Portal has undergone several enhancements:

- **DM Connect for DI-Business Terms-Logical name mapping:** You can now map logical names to business terms in the Business Glossary Manager via DM Connect for DI module.

For more information, refer to the [Adding Export Logical Names Jobs](#) topic.

- **erwin Mart Portal database configuration:** You can now connect to SQL Server and Azure SQL database via Microsoft Entra authentication. Thus, using identities managed within Microsoft Entra ID, instead of traditional SQL Server login and passwords.
- **erwin Mart Portal Advanced configuration:** Following options have been added to the Advanced settings of erwin Mart Portal configuration:
 - Update Mart Portal Path
 - Update ER360 Path

For more information, refer to the [Configuring erwin Mart Portal](#) topic.

The Is GitHub Enterprise option has been removed from the UI, its behavior is now determined by the system based on the domain type selected during source control repository configuration.

- The DM Connect for DI feature has been upgraded to support erwin DI v15.0.

erwin ER360

erwin ER360 has undergone several enhancements:

- **Worksheet Module:**

- **MetaQL Support:** You can now use a lightweight query language, MetaQL, for complex metadata queries.
- **User-defined Properties:** User-defined properties (UDPs) are now available.
- **Advanced Filters:** The filters are now enhanced under Common Attributes, Object Attributes, and User Defined Properties.

For more information, refer to the [Worksheets](#) topic.

- **Global Search:** Global search now supports advanced query syntax that enables granular and targeted search. Apart from this, search strings now support Boolean and structured search patterns. For more information, refer to the [Global Search](#) topic.
- **Metadata Indexing:** Metadata Indexing is now automated via the [Index Metadata](#) page.
- **Diagram View:**
 - The appearance and structure of models harvested from erwin Data Modeler (erwin DM) is remain visually consistent in ER360, ensuring seamless continuity between Logical and Physical Views.
 - Super Type-Sub Type relationship are now available, allowing users to clearly model generalization/specialization hierarchies in logical models.
 - All object properties, including User-defined properties (UDPs), are now available under Object Properties.

For more information, refer to the [Browse Metadata](#) topic.

Third Party Tools

Support for third-party tools has been upgraded as follows for erwin DM, erwin Mart Portal, and erwin ER360:

- erwin DM:
 - JRE 11.0.27+6 LTS
 - OpenSSL has been updated to 3.5.0.
- erwin Mart Portal and erwin ER360:
 - Apache Server has been updated to v2.4.63.
 - JDK has been updated to 21.0.7.

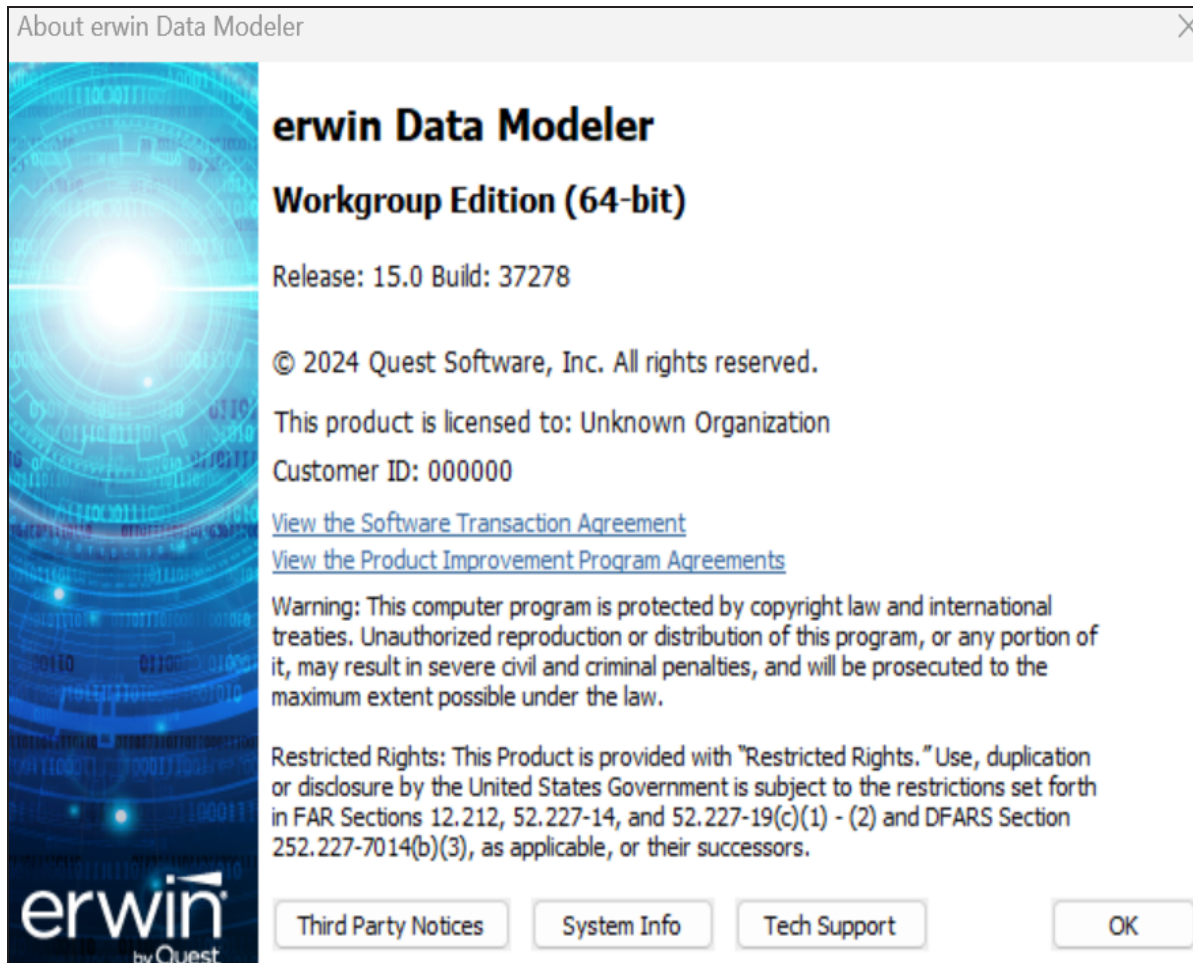
Prerequisites

Review the following prerequisites and information before installing erwin Data Modeler (erwin DM):

- [System Requirements](#)
- [Supported Target Databases](#)
- [erwin Data Modeler Workgroup Edition Requirements](#)
- [erwin Data Modeler Navigator Edition Requirements](#)

Release Numbering Scheme in erwin Data Modeler

Information about the release is displayed in the *About erwin Data Modeler* dialog using the following release numbering scheme:



Release indicates the main (GA) release number and the second number (if available) indicates the patch or service pack number of the main release. Build indicates the build number of the product. For example, "Release: 15.0 Build: 37278" on the above screen indicates Release 15.0, Build 37278.

System Requirements

You can use any of the following combinations to install erwin Data Modeler (erwin DM), the Mart database, and erwin Mart Portal:

- Install erwin DM, the Mart database, and erwin Mart Portal on the same computer.
- Install erwin DM, the Mart database, and erwin Mart Portal on different computers.
- Install erwin DM and the Mart database on one computer, and install erwin Mart Portal on a different computer.
- Install erwin DM on one computer, and install the Mart database and erwin Mart Portal on a different computer.

erwin DM

This section explains the system requirements for the computers on which you plan to install erwin DM.

Parameter	Windows	macOS
Hardware/Workstation	<ul style="list-style-type: none">• Processor - 64-bit, minimum 4 cores• 16 GB RAM• 100 GB of disk space or more as required to support your requirements• 1024 x 768 or higher screen resolution• Display settings set to 100%	<ul style="list-style-type: none">• Intel or Apple Silicon• 8 GB RAM• 100 GB of disk space or more as required to support your requirement
Operating System	<ul style="list-style-type: none">• Microsoft Windows 10• Microsoft Windows 11• (Optional) Microsoft Windows Server 2016• (Optional) Microsoft Windows Server 2019• (Optional) Microsoft Windows Server 2022• (Optional) Microsoft Windows Server 2025	<ul style="list-style-type: none">• Sonoma• Ventura• Monterey• Big Sur <div>erwin DM is not certified for macOS Sequoia.</div>

System Requirements

Parameter	Windows	macOS
	<ul style="list-style-type: none">All current Microsoft Windows critical updates	

For macOS, ensure that you are connected to the internet for .NET framework installation.

erwin Mart Portal

This section explains the system requirements and prerequisites for the computers on which you plan to install erwin Mart Portal.

Parameter	Requirement	Additional Information
Hardware/Workstation	<ul style="list-style-type: none">VM or Dedicated Physical ServerWindows-based workstation100 GB of disk space or more as required to support your specific martProcessor - 64-bit, minimum 4 coresRAM:<ul style="list-style-type: none">Only erwin Mart Portal: 16 GBBoth erwin Mart Portal and erwin ER360: 32 GB	
Operating System	<ul style="list-style-type: none">Microsoft Windows Server 2016Microsoft Windows Server 2019Microsoft Windows Server 2022All current Microsoft Windows critical updates	
Database	<ul style="list-style-type: none">Microsoft SQL Server 2017, 2019, and 2022. You can also use Microsoft SQL Azure and Amazon RDS SQL Server.Oracle 18c, 19c, 21c, and Oracle CloudPostgreSQL 12.x, 13.x, 14.x, 15.x, 16.x, and 17.x. You can also use PostgreSQL for Amazon RDS.For DM Connect for DI, the minimum SQL Server version requirement is SQL Server 2016 SP2	SQL Server: <ul style="list-style-type: none">The Mart Portal can use a standalone or share an existing database server for a Microsoft SQL Server.The SQL Server 2017, 2019, and 2022

Parameter	Requirement	Additional Information
		<p>TRUSTWORTHY database property is no longer required for the mart. After you install this product, you can optionally reset this property to OFF.</p> <ul style="list-style-type: none"> • The database user account that is used to configure the Mart must have the dba_owner role assigned. • (Optional) To use the Korean language, use the Korean_wansung_CI_AS character set. Select the character set while creating the Mart database (in the Collation field). For more information, see the SQL Server documentation. <p>Oracle:</p> <ul style="list-style-type: none"> • The Mart Portal can use a stan-

Parameter	Requirement	Additional Information
		<p>alone or can share an existing database server for an Oracle database. You can also use a pluggable database.</p> <ul style="list-style-type: none"> • To create the Mart, you must be the database schema owner user and you must have the DBA role in the target database on the Oracle server. The DBA role is required for the user who is specified in the Configure Mart Portal dialog. If the DBA privilege of this user is revoked, then erwin DM users will not be able to save model changes to the Mart. • (Optional) You have modified the following parameters in the initialization file (InitSID.ora):

System Requirements

Parameter	Requirement	Additional Information
		<p>Remote_OS_Authent=T</p> <p>OS_Authent_Prefix=TRUE</p> <ul style="list-style-type: none">• (Optional) To use the Korean language with the Mart database, use KO16MSWIN949 or AL32UTF8 character set depending on your operating system language pack. For more information, see the Oracle documentation.• If the Mart database is an Oracle database, the default tablespaces that were used for initializing any earlier release of r9 series Mart are available for the latest release. <p>PostgreSQL:</p> <ul style="list-style-type: none">• The Mart Portal can use a stan-

System Requirements

Parameter	Requirement	Additional Information
		<p>alone or can share an existing database server for PostgreSQL.</p> <ul style="list-style-type: none"> The database user account that is used to configure the Mart must have super user permissions.
erwin Mart Portal Web Client - Browser	<p>Latest versions of the following browsers:</p> <ul style="list-style-type: none"> Microsoft Edge Mozilla Firefox Google Chrome Apple Safari 	
Web Client Workstation	<ul style="list-style-type: none"> Processor - i3 or higher RAM - 8 - 16 GB Minimum Free Space - 8 - 16 GB 	
Web Server	Apache Server 2.4.63	
JDK	21.0.7	
MartPortal Service	<p>In the C:\Program Files\erwin\Mart Portal\create_service.cmd, update the RAM size setting to increase the RAM in MBs:</p> <pre>reg add "HKLM\SYSTEM\CurrentControlSet\Services\erwinMartPortal\Parameters" /v Application /d "\"%JRE_HOME%\bin\java.exe\" -Xms2048m -Xmx10240m -Dlogging.config=\"file:C:\Program Files\erwin\Mart Portal\MartApp\config\log4j2-portal.xml\" -jar \"C:\Program Files\erwin\Mart Portal\MartApp\MartPortal.jar\"\" /f</pre>	The required RAM size ranges from 2 to 10 GB for all services.
ER360 Service	<p>In the C:\Program Files\erwin\Mart Portal\create_service.cmd, update the RAM size setting to</p>	

System Requirements

Parameter	Requirement	Additional Information
	<p>increase the RAM in MBs:</p> <pre>reg add "HKLM\SYSTEM\CurrentControlSet\Services\erwinER360\Parameters" /v Application /d "\"%JRE_HOME%\bin\java.exe\" -Xms2048m -Xmx10240m -Dlogging.config=\"file:C:\Program Files\erwin\Mart Portal\MartApp\config\log4j2-er360.xml\" -jar \"C:\Program Files\erwin\Mart Portal\MartApp\ER360.jar\"\" /f</pre>	
Vault Service	<p>In the C:\Program Files\erwin\Mart Portal\create_service.cmd, update the RAM size setting to increase the RAM in MBs:</p> <pre>reg add "HKLM\SYSTEM\CurrentControlSet\Services\erwinVaultService\Parameters" /v Application /d "\"%JRE_HOME%\bin\java.exe\" -Xms2048m -Xmx10240m -Dlogging.config=\"file:C:\Program Files\erwin\Mart Portal\MartApp\config\log4j2-vaultservice.xml\" -jar \"C:\Program Files\erwin\Mart Portal\MartApp\vaultservice.jar\"\" /f</pre>	
Job Scheduler Service	<p>In the C:\Program Files\erwin\Mart Portal\create_service.cmd, update the RAM size setting to increase the RAM in MBs:</p> <pre>reg add "HKLM\SYSTEM\CurrentControlSet\Services\erwinMartJobSchedulerService\Parameters" /v Application /d "\"%JRE_HOME%\bin\java.exe\" -Xms2048m -Xmx10240m -Dlogging.config=\"file:C:\Program Files\erwin\Mart Portal\MartApp\config\log4j2-mart-jobschedulerservice.xml\" -jar \"C:\Program Files\erwin\Mart Portal\MartApp\MartJobScheduler.jar\"\" /f</pre>	
Search Service	<p>In the C:\Program Files\erwin\Mart Portal\create_service.cmd, update the RAM size setting to increase the RAM in MBs:</p>	

System Requirements

Parameter	Requirement	Additional Information
	<code>reg add "HKLM\SYSTEM\CurrentControlSet\Services\erwinSearchService\Parameters" /v Application /d "\"%JRE_HOME%\bin\java.exe\" -Xms2048m -Xmx10240m -Dlogging.config=\"file:C:\Program Files\erwin\Mart Portal\MartApp\config\log4j2-searchservice.xml\" -jar \"%C:\Program Files\erwin\Mart Portal\MartApp\search-service.jar\"\" /f</code>	
Cache Service	<p>In the C:\Program Files\erwin\Mart Portal\create_service.cmd, update the RAM size setting to increase the RAM in MBs:</p> <code>reg add "HKLM\SYSTEM\CurrentControlSet\Services\erwinCacheService\Parameters" /v Application /d "\"%JRE_HOME%\bin\java.exe\" -Xms2048m -Xmx10240m -Dlogging.config=\"file:C:\Program Files\erwin\Mart Portal\MartApp\config\log4j2-cacheservice.xml\" -jar \"%C:\Program Files\erwin\Mart Portal\MartApp\cache-service.jar\"\" /f</code>	

Ensure that you always install erwin Mart Portal on Windows operating system.

Administrative Privileges

Ensure that you have administrative privileges in the following scenario:

- **erwin DM:** The installation process writes to the registry and system folders. If you install, upgrade, or remove erwin DM without Administrative privileges, all files may not be installed or upgraded, causing problems while running the software.

Supported Target Databases

erwin Data Modeler (erwin DM) supports or is compatible with the following databases and APIs:

Database Name	Type	Version	Notes
AlloyDB	Relational	1.1	
ArangoDB	NoSQL	3.x	
Avro	Big Data	1.x	
Amazon Key-spaces	NoSQL		
Azure Synapse	Big Data		
Cassandra	NoSQL	3.x/4.x	
Couchbase	NoSQL	6.x 7.x	
Databricks	Big Data		
Db2 for i	Relational	5.x/6.x/7.x	
Db2 LUW	Relational	9.5 9.7/10.x 11.1/11.5	
Db2 z/OS	Relational	8.1 9.1/10/11 12/13	
DynamoDB	NoSQL		
Google BigQuery	Big Data		
Hive	Big Data	2.1.x	Refer to the Limitations in Hive topic.

Supported Target Databases

Database Name	Type	Version	Notes
Informix	Relational	10.x/11.x/12.x	
JSON	Big Data	1.x	
MariaDB	Relational	10.4.x	
MongoDB	NoSQL	4.x 5.x 6.x	
MySQL	Relational	8.x	MySQL 8.0.23 is certified for Amazon Aurora.
Neo4j	NoSQL	4.2.x 4.3.x/4.4.x	
Netezza	Relational	7.2	
ODBC	Relational	2.x 3.x	
OpenAPI	API	3.x	Supports only Physical modeling
Oracle	Relational	12c r2 18c 19c 21c	
Parquet	Big Data	2.x	
Progress	Relational	9.x/10.x/11.x	The erwin Data Modeler 64-bit version is not verified for the Progress 9.x/10.x database.
PostgreSQL	Relational	12.x/13.x/14.x/15.x 16.x	PostgreSQL 16.2 is certified. PostgreSQL 11.8 is certified for Amazon Aurora.

Supported Target Databases

Database Name	Type	Version	Notes
Redshift	Relational	1.0	
SAP ASE	Relational	15.x/16	
SAP IQ	Relational	15.x/16	
SAS	Relational		
SQL Server	Relational	2012 2014 2016/2017 2019/2022 Azure	
Snowflake	Relational		
Teradata	Relational	14.10 15.x/16.x 17.x	

Limitations in Hive

The following list summarizes the limitations in pure Hive (connection to Hive database directly):

- Reverse engineering from database processing is slow due to the absence of system tables. The required information is retrieved by manual parsing methods instead of a query language.
- User-defined functions are not supported.
- Retrieval of version information using the Hive command is not supported.
- A few index properties, such as deferred rebuild option, idxProperties, and Null Defined As are not supported.

erwin Data Modeler Workgroup Edition Requirements

If you plan to use erwin Data Modeler Workgroup Edition, review the following requirements to ensure your workgroup environment is set up properly.

More information:

[Administrator Server System Requirements](#)

[DBMS Requirements](#)

[Client Workstation Requirements](#)

Administrator Server System Requirements

The disk space required for the administrative files used to create and manage the database is separate from the disk space required to accommodate models on the server where the database is located. Greater CPU speed, and more RAM and disk space result in better performance.

DBMS Requirements

Before you install erwin Data Modeler to use a Mart Portal in a workgroup environment, ensure that you are using a supported DBMS as your host server. This release supports the following host DBMSs:

Database	Versions	Additional Details
Oracle	18c, 19c, 21c, and Oracle Cloud	
PostgreSQL	12.x, 13.x, 14.x, 15.x, and 16.x	You can also use PostgreSQL for Amazon RDS.
SQL Server	Microsoft SQL Server 2017, 2019, and 2022	You can also use Microsoft SQL Azure and Amazon RDS SQL Server.

To create, update, or delete a mart in erwin Data Modeler Workgroup Edition, you must have the following database rights:

- Microsoft SQL Server 2017, 2019, and 2022, you must be the database owner (dbo).

The dbo is no longer required to have the sysadmin role. The SQL Server 2017, 2019, and 2022 TRUSTWORTHY database property is no longer required for the mart. After you install this product, you can optionally reset this property to OFF.

- For Oracle, you must be the database schema owner and have the DBA role.

Before you install Mart on the server, verify that the DBMS environment is prepared for the installation, and that the server system requirements meet at least the minimum specifications. At least one user with administrative privileges is available on the DBMS.

The dbo role for Microsoft SQL Server is necessary only during the installation or upgrade. You can strip the installer of the dbo role after the installation or upgrade is complete.

For more information about preparing the DBMS environment, see the erwin Data Modeler Workgroup Edition Implementation and Administration Guide.

Client Workstation Requirements

You must install erwin Data Modeler on each client workstation that needs to access the Mart Portal to connect to the Mart. It is recommended that client workstations have at least 16 GB of RAM.

You can install erwin Data Modeler Navigator Edition as a client for erwin Data Modeler Workgroup Edition.

In a workgroup environment, erwin Data Modeler can connect to the Mart Portal with the same release version.

erwin Data Modeler Navigator Edition Requirements

If you plan to use erwin Data Modeler Navigator Edition, review the following requirements to ensure your environment is set up properly.

Support for erwin Data Modeler Navigator Edition

erwin Data Modeler Navigator Edition is enabled for use with a mart-enabled version of erwin Data Modeler (Workgroup Edition). Consult with your mart administrator for a GUEST user permission to access models in erwin Data Modeler Workgroup Edition.

You must use a supported DBMS. This release supports the following host databases:

Database	Versions	Additional Details
Oracle	18c, 19c, 21c, and Oracle Cloud	
PostgreSQL	12.x, 13.x, 14.x, 15.x, and 16.x	You can also use PostgreSQL for Amazon RDS.
SQL Server	Microsoft SQL Server 2017, 2019, and 2022	You can also use Microsoft SQL Azure and Amazon RDS SQL Server.

Installation Considerations for erwin Data Modeler Workgroup Edition

Review the following installation considerations before installing the product. For more information about the installation process for a workgroup environment, see the erwin Data Modeler Workgroup Edition Implementation Guide.

This section contains the following topics

[erwin Data Modeler and Mart Release Numbers](#)

[Microsoft SQL Server 2005 onward Permissions](#)

[Specify Use of Foreign Characters With Microsoft SQL Server](#)

erwin Data Modeler and Mart Release Numbers

You must install a Mart or must upgrade to a Mart that is of the same release number as erwin DM. For example, install or upgrade to an r9.5.0 Mart when you install or upgrade to erwin DM r9.5.0. Using different versions of erwin DM and Mart may lead to unexpected results including corruption of the Mart database or the models. Therefore, we recommend that you install the same release of the Mart and erwin DM.

Microsoft SQL Server 2005 onward Permissions

For SQL Server 2005 onward, you only need to have public assigned to save to the mart. However, when the repository is on a SQL Server 2005 or above instance, you need to have the bulkadmin permission designated as well. The ability to do bulk inserts (which was permitted by public, previously) is no longer part of the public permission. You must explicitly define this permission or when you attempt to save a model to a new mart instance created using a SQL Server 2005 or above database, an error "You do not have permission to use the bulk load statement." is returned.

Specify Use of Foreign Characters With Microsoft SQL Server

For Microsoft SQL Server modify your registry settings to have certain foreign language characters in your models recognized.

Follow these steps:

1. Click Run on the Start menu.
2. Enter *regedit*.

The Registry Editor opens.

3. Verify or add the following registry entry:

[HKEY_LOCAL_MACHINE\SOFTWARE\Microsoft\MSSQLServer\Client\DB-Lib]

"AutoAnsiToOem"="ON"

"UseIntlSettings"="ON"

4. Click File, Exit.

Your configuration is set to recognize foreign language characters in your models.

[▲ Back to Top](#)

Installation Considerations for erwin Data Modeler Navigator Edition

Review the following installation considerations before installing the product. See the erwin Data Modeler Navigator Edition User Guide for more information about the installation process.

This section contains the following topics

[Silent Install](#)

Silent Install

This product does not provide an unattended or silent install.

General Considerations for Using erwin Data Modeler Workgroup Edition

The following sections contain general information you should know before using erwin Data Modeler in a workgroup environment.

This section contains the following topics

[Model Display in the Difference Reconciliation Dialog](#)

[Uninstalling erwin Data Modeler Workgroup Edition](#)

Model Display in the Difference Reconciliation Dialog

In a workgroup modeling environment, two users may check out and make changes to the same model. The first user may make changes to the model and save the changes to the mart. When the second modeler makes changes and saves them to the mart, the Difference Reconciliation dialog is displayed. You use features in this dialog to view the differences on the object level, the more detailed property level, or search the text of the comparison lists.

In the Difference Reconciliation dialog, the model in the left pane is the current model that you are checking in to the mart. The model in the right pane is the version of the model already in the mart.

Uninstalling erwin Data Modeler Workgroup Edition

You can use the Windows uninstall utility to uninstall erwin Data Modeler. However, when you uninstall erwin Data Modeler in a workgroup environment, the mart database remains intact. To remove the database from your computer, delete the mart database first, and then uninstall erwin Data Modeler.

General Considerations for Using erwin Data Modeler Navigator Edition

The following sections contain general information you should know before using erwin Data Modeler Navigator Edition.

This section contains the following topics

[Model Display in the Difference Reconciliation Dialog](#)

[Help Files](#)

Model Display in the Difference Reconciliation Dialog

In a workgroup modeling environment, two users may check out and make changes to the same model. The first user may make changes to the model and save the changes to the mart. When the second modeler makes changes and saves them to the mart, the Difference Reconciliation dialog is displayed. You use features in this dialog to view the differences on the object level, the more detailed property level, or search the text of the comparison lists.

In the Difference Reconciliation dialog, the model in the left pane is the current model that you are checking in to the mart. The model in the right pane is the version of the model already in the mart.

Help Files

The context sensitive online help in erwin Data Modeler Navigator Edition is identical to the online help in erwin Data Modeler. This means that the online help may discuss capabilities such as saving a model that is not possible in the erwin Data Modeler Navigator Edition product.

Known Issues

This section contains the known issues that you should review before using the application.

Windows

SI No	Issue and Description
1	NoSQL- nested structure models-harvesting to erwin Web Portal is not supported
2	erwin Mart - Cassandra: Exporting Cassandra model into DI displays the Column Definition value in Column Comments
3	FE: The Thick option is not saved on the Edit Options page in the Preview
4	erwin Mart - Azure SQL: The Settings and DI Configuration tabs do not display password
5	MySQL RE: Column Format and Storage Memory options are not retrieved
6	Switching JDBC connection from one target DBMS to the other produces error
7	Azure Synapse REDB: Same View\Materialized View with same name and different schemas REDB produces unexpected results
8	UI: erwin DM Crashes on Creating an Object with Max Length and Deleting
9	FE Options Selected in Custom Option Set are not Retained
10	RedShift FE - Few functions do not execute from erwin DM FE Wizard
11	Redshift REC - Comments are Truncated at 65536 Characters
12	RedShift REC - The properties are not retrieved for library object in RedShift
13	RedShift REC-Column Values need to Follow the Exact Order According to Partition Specification
14	Redshift REC - Performance is Slow in Redshift for REDB Process

Known Issues

SI No	Issue and Description
15	Db2 z/OS-ESX-1015,190110 Messages are Displayed on Copy-pasting a Table that has a Period Clause
16	NSM P to L: Derive PO Model to LO with NSM Template Attached
17	erwin Data Modeler cannot Connect to erwin Mart Portal on Host Machine
18	Netezza REC- Comments are Truncated at 1024 Characters
19	SQL 1105 Error
20	Model and Version Name Limit on Oracle
21	.Net Requirement
22	Report on Glossary Words Includes Extra Characters
23	Updating Profile Description from Notepad
24	Unwanted Result Rows in Report
25	DSM Logical to SQL Server 2012
26	Report Designer Functions for a Large Model
27	Incorrect UDP in UDP Report
28	Invalid Column Node for Db2 LUW Model in View Report
29	Mart Portal Name in Korean
30	Generating Reports with Korean Characters in User Name
31	Error While Creating a Profile Using Special Characters in Mart Portal
32	File IO: For a Parent or Child Table with Multiple Child Tables, Other Child FK Attributes are Highlighted on Mouse Hover on One Relationship
33	Owner Name not Displayed while Sorting a Guided Editor's list of Objects

Known Issues

SI No	Issue and Description
34	Google BigQuery: Row Access Policies are not retrieved after REDB
35	Oracle: Alter script is not generated for columns in a Materialized View
36	Oracle: Alter script is not generated for columns in a View
37	Oracle: Alter script is not generated and comments are deleted for Materialized Views
38	Oracle: Views and Materialized Views disappears from the ER diagram
39	Oracle: Alter script is not generated and comments are deleted for Views
40	Snowflake: Views with certain syntax are not reverse engineered
41	Snowflake REDB: Performance degradation when Tag object is selected
42	Snowflake REDB: Errors are displayed when the database contains more than 10,000 tables
43	MariaDB REDB: Error is displayed while connecting database through JDBC
44	DM Connect for DI: Valid values are not exported, if the name exceeds 200 characters
45	Couchbase Cloud: Full Text Indexes, Buckets, View, and User Objects are not completely supported
46	Teradata 14.10, 15.x/16.x: REDB with JDBC Connection Issues
47	Teradata 17.x REDB: 'With Check' property of Tables are not retrieved in the Relationship Editor
48	Teradata 17.x: Procedure and Function displays Syntax error during REDB
49	MySQL REDB: Reverse Engineering different Schemas display Views with the same Table name
50	Duplicate Triggers are created when you reopen .XML Model
51	Alter script is not generated in the Alter Script Wizard, when an User Defined View is renamed/modified
52	Report Designer displays Data Vault objects and properties under the Database for a

Known Issues

SI No	Issue and Description
	Logical report type
53	PostgreSQL/AlloyDB 1.1: Duplicate Inherited Tables are retrieved after REDB
54	Copy-Paste: Renamed column name is migrated as role named column when you copy paste in the PO model
55	Model Checkout: Opening a checked out model in Mart displays Read Only error
56	Denorm:Data loss (Tables are missing) when Denormalize the Parent and child having multi relationships in bidirectional or circular
57	Search Index:REC-Search Index properties are not retrieving from DSE Cassandra database while REC
58	Avro: Norm-De norm: FE: FE script for record containing the array of objects type is syntactically incorrect
59	Denorm-CC: Objects are not exported properly from MongoDB model to RDBMS models
60	MITI-JSON models are not Exporting and Importing with MITI bridges
61	Reporting:Oracle: 'Java' Object displaying in the Report designer for oracle database but its not a valid object
62	Korean OS: Korean JSON format file is not opening in Korean OS
63	PostgreSQL 16.x:RES: INDEX: No Syntax error is throwing while performing RES, Index method spgist ASC/DESC options should not set at UI
64	JSON:Logical/Physical: The specific Netezza REDB model that is attached is not being obtained as intended on the logical/physical side after being derived to JSON
65	PostgreSQL 16.x:RES: Function: Syntax errors while RE from the script
66	PostgreSQL 16.x:REDB: Procedure: SQL body is not retrieving after REDB
67	PostgreSQL 16.x:Alter:Materialized View:No schema generated after removing the Storage parameters
68	PostgreSQL 16.x:Alter: Tablespace: Script not generated in the alter preview, after

Known Issues

SI No	Issue and Description
	removing the tablespace options
69	When we open the previous version Models the DV Object Attributes not setting any Domain parent and Data Type
70	JSON: Some garbage and extra characters are coming after save as model in JSON format and reopen
71	DB2 for Zos 13: For Db2 for Zos Certification in create Model, DL, Target DB change, CC and Reporting /13 should be added
72	JSON_SaveAs:GBQ:Select statement missing for template_code option in Function\Procedure object
73	Snowflake:REC: A database object is retrieved more times while REDB
74	JSON: While Saving and Opening the JSON model, a Progress bar with a color or percentage indication should be displayed
75	JSON: New line characters are displaying when we save the model into JSON format and then compare with original model
76	JSON: Foreign Key Constraint Name is retrieved extra in the JSON model when compared with erwin base model
77	JSON: Extra Underscore (_) is retrieved for Model Shapes and Auto Attached objects in the JSON model when compared with erwin base model
78	JSON: Extra Backslash is retrieved for Quoted words and Spaces are not generated in Comments in the JSON model when compared with erwin base model
79	JSON: Disk Volumes ('*') are not retrieved for storage groups in the JSON model when compared with erwin base model
80	JSON: Comments are retrieved extra for Domains, and Table Column Comments in the JSON model when compared with erwin base model
81	JSON: Column Headings are not retrieved in the NSM CSV file in the JSON model when compared with erwin base model
82	JSON: Bend Points are not retrieved for Model Shapes in the JSON model when compared with erwin base model

Known Issues

SI No	Issue and Description
83	JSON : Opening the JSON file is taking time
84	Azure Devops: When Unselecting the "Auto Append" checkbox in the "Commit to Git" dialog, The Alter script file is not replaced in the Local path
85	Azure Devops: The "Username" and "Password" fields should be disabled or removed for Azure Devops connection in the "Git Connection Manager" dialog
86	Azure Devops: Should not be able to place a Cursor in the Greyed out fields i.e., "Git Repository" and "Git Branch" in the 'Commit to Git' wizard
87	Azure Devops: Proper Tooltip should be displayed when the mouse hovers over the "Git Connections" icon
88	Azure Devops: FE script is not Overwritten properly in the Local path while trying to save the two different DB FE scripts in one file
89	PostgreSQL 16.x : RES : TABLE: Not throwing any syntax error while performing RES with OIDS = TRUE
90	Azure Devops: When Providing Backslash or without Slash in the "Git Path" field, the Git Path name is appended to the File name, and the File is not saved in the Azure Devops
91	SQL Server:UI: When we derive the Logical only emovies model to SQL Server. One extra column is added on the physical side of the model
92	PostgreSQL REC The erwin DM application is crashing while performing REC with Materialized View for Automation Database
93	<p>Snowflake: The complete Timestamp function is not retrieved for the cloned Dynamic Tables during RES</p> <p>When you clone a Dynamic Table type while reverse engineering a Snowflake database using a script, the complete timestamp information for cloned tables is not retrieved.</p>
94	<p>SQL Server 2019/2022: The column name for column store index is not updated in Alter Schema</p> <p>When you generate alter script for SQL Server, the column name is not updated for the column store index.</p>

Known Issues

SI No	Issue and Description
95	<p><Modification_Time> tag's date format should be changed to 'yyyy-mm-dd hh:mm:ss' in XML file format</p> <p>The XML file containing the <Modification_Time> tag value is displayed as 'mm/d-d/yyyy' and time 12 hours with AM/PM format. Instead, the tag value should contain the date format as 'yyyy-mm-dd' and time should be in 24 hour format.</p>
96	<p>MITI: 'Invalid bridge parameter value (version: 10.00)' is displayed in the import log file while using MITI import bridges</p> <p>'Invalid bridge parameter value (Version: 10.00)' warning statement is displayed when you import external files using MITI Bridges.</p>
97	<p>erwin ER360 Annotation/Shape on Diagram</p> <p>In comparison for ER-diagram for Physical, the order is not same as that in erwin DM. Also, in erwin ER360 we see extra partition line.</p>
98	<p>erwin ER360 displays subtype and super type relationship incorrectly</p> <p>erwin ER360 displays subtype and super type relationship incorrectly as independent connections.</p>
99	<p>DM 15.0 Entity/Attribute Property Adding UDP Name Causes Flicker where previous data is showed up</p> <p>When a user adds a UDP (User Defined Property) name in the Entity/Attribute Property panel, the UI exhibits a flickering behavior.</p>
100	<p>DM 15.0 SQL Server 2019/2022 Stored Procedure The comment in stored procedure is missing in code tab</p> <p>Comments within the stored procedure are not displayed in the Code tab.</p>
101	<p>DM 15.0 SQL Server 2019/2022 View The Columns in Partition By clause is missing for the view in SQL Tab</p> <p>When viewing a SQL Server 2019/2022 view in the SQL Tab of DM 15.0, columns specified in the PARTITION BY clause are not displayed.</p>
102	<p>Mart Portal 14.0 DI Issue Business Terms are not displayed at different locations in Mart and Erwin DM</p>

Known Issues

SI No	Issue and Description
	Business Terms mapped to model columns or entities are not consistently displayed across different locations in erwin DM and Mart after importing from various glossary sources.
103	<p>r15.0: All Databases: UI: When we add and remove the ER Diagram/Subject area and then do Redo, we receive a GDM message.</p> <p>Performing a Redo operation after adding and deleting an ER Diagram or Subject Area triggers an unexpected GDM message.</p>
104	<p>r15.0: DM: Snowflake: In FE Constraint Comments are not coming</p> <p>When working with Snowflake models, comments added to Foreign Key (FE) Constraints are not displayed in the model or in the generated SQL.</p>
105	<p>r15.0: DM: Snowflake: In REDB Iceberg Table properties are not coming</p> <p>When working with Snowflake models, Iceberg table properties are not visible in the REDB view.</p>
106	<p>r15.0:DM: PostgreSQL_16.x: When All the Grants are present in VIEW scripts then Grants are not applying while performing RES</p> <p>When performing RES on PostgreSQL 16.x, if all GRANT statements are included in the VIEW scripts, the GRANTS are not applied or captured in the resulting model.</p>
107	<p>r15.0:DM: Snowflake: Constraint comments are not supported in RES</p> <p>Comments associated with constraints (for example, primary keys, foreign keys) are not captured during RES from Snowflake databases.</p>
108	<p>r15.0:DM: Snowflake: In REDB for Dynamic Iceberg Tables some properties are not coming</p> <p>Certain properties of Dynamic Iceberg Tables are not displayed in the REDB view after reverse engineering from Snowflake.</p>
109	<p>r15.0:DM: Snowflake: REDB: Hybrid Table: The Rely and Enforced properties are missing for constraints in UI</p> <p>When reverse engineering Hybrid Tables from Snowflake, the Rely and Enforced properties for constraints are not displayed in the REDB UI.</p>
110	r15.0:DM: Snowflake: There is no inline Constraint Option is not present in FE

Known Issues

SI No	Issue and Description
	The option to define inline constraints is not available in the FE process for Snowflake models.
111	r15.0:DM:Snowflake: In REDB Row Access policy is not set on the table When reverse engineering Snowflake models, Row Access Policies associated with tables are not reflected in the REDB view.
112	SF 02242050 - R12.5 - Reverse Engineer from SQL Server with ODBC causes crash when invoking ODBC Administrator Attempting to reverse engineer from SQL Server using an ODBC connection causes the application to crash when the ODBC Administrator is invoked.
113	erwin Mart Portal All Connectors Unable to save the edit jobs When job interval / email is changed, jobs are not saved.
114	erwin Mart Portal All Connectors Run Now Job is not displayed in Calendar View Jobs scheduled as Run Now are not displayed in the Calendar View.
115	erwin Mart Portal Recurring Job Time scheduled for Recurring Job is incorrect Scheduled Time is the Next Run time. Current Scheduled Time is not considered.
116	r15.0:JSON:UI: The object field containing the "\$defs" keyword should not be regarded as a normal container data type field. Rather, it should be specifically treated as only an object type, if it has "\$defs" keyword. When handling JSON schemas, the object field containing the "\$defs" keyword is incorrectly interpreted as a general container data type in the UI. According to JSON Schema standards, "\$defs" should be treated strictly as an object type, not as a reusable or nested container.
117	r15.0:JSON:UI: The JSON object cannot simultaneously have both internal and external definitions. The JSON modeling interface currently allows a single JSON object to include both internal definitions (via "\$defs") and external references (via "\$ref"). This configuration is not compliant with JSON Schema standards and may lead to incorrect model interpretation or validation issues.
118	r15.0:MongoDB 6.x:Erwin can't connect to the MongoDB database using SSL con-

Known Issues

SI No	Issue and Description
	Connection string. Users are unable to establish a connection to MongoDB 6.x using an SSL-enabled connection string. The connection attempt fails, preventing reverse engineering or model access over secure connections.

macOS

SI No	Issue and Description
1	erwin DM crashes while clicking on Next after connected to the DM through ODBC erwin DM crashes on clicking Next after connecting via ODBC.
2	Getting an error for Snowflake through the JDBC connection for "Snowflake JDBC Key-Pair Authentication Encrypted" The error, "Snowflake JDBC Key-Pair Authentication Encrypted and Unencrypted", is displayed in the RE wizard.
3	REDB: Error message is displayed while Reverse engineer from the database. For Neo4j, an error occurs while running reverse engineering from database (REDB).
4	Error message is displaying while adding new folder to erwin project
5	Email Notification is not working with outlook SMTP settings in Scheduler While testing Email notification for Scheduler, the notification, "Test message has been sent" is displayed. However the recipient does not receive the email.
6	DynamoDB local database is not connecting from erwin DM DynamoDB local database does not connect when DynamoDB is installed locally.
7	Model is not saving under default location when job is executed from Scheduler For jobs executed via Scheduler, models are not saved at the default location, ./erwin/Data Modeler r9/Data/Models/.
8	Query tool is not working and the Data Sources are not listing

Known Issues

SI No	Issue and Description
	In ODBC Data Sources "erwin_r9" and "erwin_r9_current" are not listed.
9	System related info is not displayed on clicking the 'System Info' button in 'About erwinspy (AddIn)' dialog
10	The 3D style illustrations (Torus Style, Pie and Doughnut) are not being rendered on Object Count as well as Object Browser
11	Short cut keys are not working in the report designer page
12	Print preview does not display in report designer
13	Garbage characters are displayed in the Font drop-down options in the Report Designer
14	When we add and remove the ER Diagram/Subject area and then do Redo, we receive a GDM message.
15	Label text is missing in 'Records Count' page while performing 'Two Table RollUp' transformation
16	MITI import or Export throws error MITI import or export logs an error, "Model BridgeList.XML file is invalid", in the log file.
17	Black marks are displayed in Model Explorer for Annotation & Domain Objects Instead of appropriate icons, black boxes are displayed for Annotation and Domain objects in the Model Explorer.
18	eMovies & Publications models are not available under the My models folder
19	Models are not able fetched from mart repository while using MITI bridges While using the Import from External Format wizard (MITI), models are not fetched from mart repository and an error occurs.
20	The "Expand All (Ctrl -)" help text is not displayed when the mouse hovers on the 2nd icon in Object Browser in MacOS
21	The Node locked license code works as a Cloud based license code when activated online

Known Issues

SI No	Issue and Description
	The Node locked license code works as a Cloud based license code when activated online. This launches the Licensing dialog every time by masking the license code and opens the erwin DM when you click 'OK' button.

NoSQL- Nested Structure Models-Harvesting to erwin Web Portal is not Supported

Harvesting NoSQL nested structure models to erwin Web Portal is not supported.

erwin Mart - Cassandra: Exporting Cassandra Model into DI displays the Column Definition Value in Column Comments

The export of a Cassandra model into erwin DI using DM connect for DI is displaying unwanted values in erwin DI. After the export, the Column Definition value is displayed in the Column Comments.

FE: The Thick Option is not Saved in the Preview

Forward engineering with any database does not save the following options available in the **Preview > Edit Options > Editor**:

- Thick
- Automatic reload of externally modified files

erwin Mart - Azure SQL: The Settings and DI Configuration Tabs do not Display Password

The Settings and DI Configuration tabs do not display user password in the erwin Mart that is configured with Azure SQL.

MySQL RE- Column Format and Memory Storage Options are not Retrieved

Properties that are saved in the Show statement are not retrieved in the Column editor after Reverse Engineering MySQL.

Switching JDBC Connections from one Target DBMS to Other Produces Error

For RE connection there are two issues:

- There is no error message when JDBC is not connected to the database.
- There is an error when JDBC connection is switched from one target DBMS to the other.

Azure Synapse REDB: View or Materialized View with Same Name and Different Schemas REDB Produces Unexpected Results

For a View\Materialized View with same name and different schemas REDB does not work as expected.

UI: erwin DM Crashes on Creating an Object with Max Length and Deleting

erwin DM crashes when an object is created with maximum length name and deleted.

FE Options Selected in Custom Option Set are not Retained

Options selected in forward engineering custom option set are not retained appropriately for MariaDB, Snowflake, SQL Server 2019, SQL Azure, and Azure Synapse databases.

RedShift FE - Few functions do not execute from erwin DM FE Wizard

Due to a limitation in the driver, few SQL language functions do not execute in DB from erwin DM FE wizard. However, the same functions work in the DB client.

Redshift REC - Comments are Truncated at 65536 Characters

Due to an ODBC restriction, all comments are limited to 65536 characters. In addition to this, retrieval of large number of characters in comments or SQL text, requires one to change the following under ODBC settings > Data Type Options:

- Increase the value of Max Varchar.
- Clear the Use Unicode option.

To retrieve the maximum length of the object names, select the Use Unicode option. At a time, you can choose to either retrieve large number of characters in comments/SQL text or object names.

Redshift REC - Properties of Library Object are not Retrieved

Due to unavailability of system tables to store library properties, the properties of a Redshift Library object are not retrieved.

RedShift REC-Column Values need to Follow the Exact Order According to Partition Specification

RedShift REC-Column Values need to Follow the Exact Order According to Partition Specification

Column values are retrieved only according to the column order defined in the Partition By clause. To ensure that column name and column values correctly map to each other, follow the column order defined in the Partition By clause in the Create statement.

Redshift REC - Performance is Slow in Redshift for REDB Process

The time taken for an REDB process on a Redshift database depends on the network speed and the geographical location of your database instance.

The following table shows the results for a database with 200 tables, 250 views, and other supported objects:

Network Speed	With all options in RE Option Set	Without Partition Element option (Default option set)	Without external tables (Unselect 'S3BucketObjects' option)
50 Mbps	4 Hours	3 Hours	2 Hours
1 Gbps	1 Hour	14 Minutes	4 Minutes

As a best practice, use the default option set when not working on Partitions.

Db2 z/OS-ESX-1015,190110 Messages are Displayed on Copy-pasting a Table that has a Period Clause

Db2 z/OS-ESX-1015,190110 Messages are Displayed on Copy-pasting a Table that has a Period Clause

While copy-pasting a Db2 z/OS table that has a period clause from one model to another, ESX-1015,190110 messages are displayed. Also, the period clause properties are not retained and are disabled on the UI.

NSM P to L: Derive PO model to LO with NSM Template attached

While deriving a PO model; that does not have NSM objects, to LO model, if you attach an NSM template, a List NSM Option Objects dialog is displayed. If you do not select an object here, although the model will be derived, naming standards will not be applied.

erwin Data Modeler cannot Connect to erwin Mart Portal on Host Machine

erwin Data Modeler (DM) cannot connect to the erwin Mart Portal (MS) on an erwin Mart Portal host machine. This happens because the client application version is different from the erwin MS version. To counter this issue, do the following:

1. Open Internet Explorer.
2. Click Internet options.
3. Go to the Security tab.
4. Set security level to low.
5. Click Sites.
6. Add `http://machine-name:18170/MartAdmin/` or `http://ip address:18170/MartAdmin/`
7. Try to connect the Mart from erwin DM with IP address or machine name.

API-Related Features do not Work on a Windows 2008 R2 SP1 Machine

On a Windows 2008 R2 SP1 machine, a bug in the operating system causes an access violation, due to which, API-related features (MITI, and erwin Spy) do not work.

Netezza REC- Comments are Truncated at 1024 Characters

Due to an SQL text retrieval restriction on Netezza side, all comments are limited to 1024 characters.

SQL 1105 Error

When you are upgrading to the current release on Microsoft SQL Server in a workgroup environment, during the mart conversion process, you may get the message "Sql 1105" if you run out of free hard disk space during the process.

Stop the conversion process, and either free or add hard disk space. Delete the already created r9 tables and then re-attempt the conversion.

Model and Version Name Limit on Oracle

In a workgroup environment, when you save a model to an Oracle mart, the model name must be less than 130 characters. If you exceed the 130 character limit, the model will not save. Because the version name is derived from the model name (for example, <ModelName>:<version number> by <UserName> on <VersionCreateDate>), you should use model names considerably less than 130 characters in length to avoid problems with saving a model version.

.Net Requirement

The current release requires .NET 4.7.1 to be installed on your system. If you do not have it installed, the erwin Data Modeler installation will attempt to install it. After you install the .NET framework, you must restart the computer to make the changes take effect.

Report on Glossary Words Includes Extra Characters

Suppose a report is generated on a model that includes an NSM object. If the glossary words are included in the report, extra characters appear for all glossary words.

Updating Profile Description from Notepad

In the erwin Mart Portal Profile Management page, suppose the description is copied and pasted from a Notepad file and is saved. The updated description displays syntax (\n) as well.

Unwanted Result Rows in Report

In a Subject Area report, suppose the Subject Area name is included in the report and the diagram name is specified at run time. The report lists all Subject Areas instead of the Subject Area that corresponds to the selected diagram.

DSM Logical to SQL Server 2012

Suppose a Logical/Physical SQL Server 2012 model is attached with a DSM object that is active. Suppose a new Logical Definition for the Number domain is created and mapped to SQL Server 2012 and Date is selected for domain. If the newly created Logical Definition is applied to a column in a model, and if the physical view is seen, the data type is still displayed as Number.

Report Designer Functions for a Large Model

Generating reports is a memory intensive process and when the data set is very large, the process uses the maximum memory. When the maximum memory is consumed, a warning message informs you that the application might stop responding if you continue processing the report. If you choose to continue to run the report and the memory is completely used, the program might stop responding. If you choose not to continue, the report execution is terminated.

To resolve this problem, you can generate multiple small reports with fewer properties.

Incorrect UDP in UDP Report

Suppose you want to generate a report on the UDPs using Report Designer. Suppose you have already created a UDP report template and generated the report for a different model. If you close the model, open another model, and use the same template to generate the UDP report, then the report includes the UDP name from the previous model. In the result grid, the column heading shows the UDP name of the previous model, while the UDP value is of the current model. In addition, the properties of the Report Explorer also shows the UDP name of the previous model. However, the Report Properties dialog shows the correct UDP name.

Invalid Column Node for Db2 LUW Model in View Report

In a Db2 LUW model, suppose a nickname table and a view exist and a Column Option level UDP is added to a column. If a View report is generated using the Report Designer, the Column Option node is available for View. If a user selects the Column Option node, the UDP is not included in the report for the selected column.

Mart Portal Name in Korean

Suppose that you provide the Mart Portal machine name in the Korean language (Korean characters) and configure the Mart Portal. If you try to connect to the Mart from erwin DM and you provide the Korean language name for Server Name, the following message appears:

```
The client application version is different from the Mart Portal
version. Install the same version of the application and the Mart
Portal and then try.
```

If you try to log in to erwin Mart Portal by using the Korean language name, it does not display.

Generating Reports with Korean Characters in User Name

Suppose that you have initialized a Mart with a user name that has Korean characters. You connect to the Mart with this user name and generate a report on Mart users (click Tools, Mart Reports, Global Reports, Users). The report is not generated and the message, You can not connect. Incorrect log on parameters is displayed. (The actual message is displayed in the Korean language. The message provided here is the translated message.)

Error While Creating a Profile Using Special Characters in Mart Portal

When you create a profile in Mart Portal using special characters such as !@#\$%^&*()_+={}:~<>?|/.,;"'[], and space, you will get one of the following error messages repeatedly and the Mart Portal hangs.

Illegal Group

or

500 The call failed on the server; see server log for details

or

String index out of Range:1

To avoid this error, create a profile without using the special characters. When the Mart Portal hangs, refresh the Mart Portal.

File IO: For a Parent or Child Table with Multiple Child Tables, Other Child FK Attributes are Highlighted on Mouse Hover on One Relationship

If one parent/child entity has multiple children with different relationship lines, the migrated attributes in all child tables are highlighted on hovering the mouse on any one of the relationship lines.

For r7.x models being upgraded to r9.8, the work around for this is as follows:

On the Model Upgrade Wizard, go to the Subject Area tab and select the "Apply a default theme for all the diagram" check box and continue with the process.

Owner Name not Displayed while Sorting a Guided Editor's list of Objects

For Hive and Teradata the owner is a database and not an owner or schema. Therefore, while attempting to sort a guided editor (for example, Subject Area Editor) list of objects by Owner_Name + Object_Name, the owner name is not displayed.

Google BigQuery - Row Access Policies are not retrieved after REDB

Due to unavailability of metadata or python API, the row access policies are not retrieved after REDB for Google BigQuery.

Oracle: Alter script is not generated for columns in a Materialized View

If a Materialized View is using a User Defined SQL, alter script is not generated when a column is added, deleted, or renamed.

To avoid this, add the column changes directly to the DDL in the User Defined SQL tab.

Oracle: Alter script is not generated for columns in a View

If a View is using a User Defined SQL, alter script is not generated when a column is added, deleted, or renamed.

To avoid this, add the column changes directly to the DDL in the User Defined SQL tab.

Oracle: Alter script is not generated and comments are deleted for Materialized Views

If a Materialized View is using a User Defined SQL, alter script is not generated and comments are deleted when the Materialized View is renamed.

To avoid this, make the changes directly to the DDL in the User Defined SQL tab.

Oracle: Views and Materialized Views disappears from the ER diagram

When a User Defined SQL script is committed in a View or Materialized View object, the object is removed from the Entity Relationship (ER) diagram.

Oracle: Alter script is not generated and comments are deleted for Views

If a View is uses a User Defined SQL, alter script is not generated and comments are deleted when the View is renamed.

Snowflake: Views with certain Syntax are not Reverse Engineered

When you reverse engineer a Snowflake database, View objects are not imported if database contains:

- Identifier clause such as CREATE OR REPLACE VIEW IDENTIFIER('SERVICENOW_PROD.CMDB.change_request__VIEW')
- Column names such as NUMBER, ORDER, or SCOPE
- Clause named WHERE NOT IS_DELETED

Snowflake REDB: Performance Degradation when selecting Tag object during REDB

When you reverse engineer a Snowflake database, the process takes longer to complete if a Tag object is selected.

Snowflake REDB: Errors are displayed when the database contains more than 10,000 tables

When you reverse engineer a Snowflake database with more than 10,000 tables, errors are displayed, and the tables are not imported.

MariaDB REDB: Error is displayed while connecting database through JDBC

When you reverse engineer a MariaDB database through JDBC, error is displayed because JAR (version 2.7.1) is not compatible with current version of JDK (version 17) in Data Modeler. But, JAR (version 2.6.1) is compatible with current JDK (version 17) in DM.

Couchbase Cloud Limitations: Full Text Indexes, Buckets, View, and User Objects are not completely supported

Couchbase Cloud Limitations: Full Text Indexes, Buckets, View, and User Objects are not completely supported

The following issues indicate limitations in the Couchbase Cloud:

- erwin Data Modeler crashes when you execute index statements from FE Wizard.
- Full Text Indexes, Buckets, Views, and User Objects do not execute from the FE Wizard.
- Full Text Indexes, Buckets, Views, and User Objects do not execute in Couchbase Capella.
- Index objects do not retrieve during REDB.

DM Connect for DI: Valid values are not exported, if the name exceeds 200 characters

When you use the validation rules, the valid values are not exported to DI if the names exceed 200 characters.

Teradata 17.x REDB: 'With Check' property of Tables are not retrieved in the Relationship Editor

Teradata 17.x REDB: 'With Check' property of Tables are not retrieved in the Relationship Editor

The 'With Check' properties from the system tables are not retrieved during REDB in the Relationship Editor wizard.

Teradata 14.10, 15.x/16.x: REDB with JDBC Connection Issues

The following issues exist for Teradata database when you perform REDB using a JDBC connection:

- **Teradata 14.10:** Duplicate Replication Group is retrieved when you REDB using a JDBC connection.
- **Teradata 15.x/16.x:** Identity Options are not retrieved for Table Columns when you use a JDBC connection.

Teradata 17.x: Procedure and Function displays Syntax error during REDB

System defined functions and procedures display syntax error during REDB, as the RES grammar function is not supported.

MySQL REDB: Reverse Engineering different Schemas display Views with the same Table name

MySQL REDB: Reverse Engineering different Schemas display Views with the same Table name

When you reverse engineer different schemas, the Views from same table name are attached to the wrong tables. Also, same table name from different schemas are not handled.

Duplicate Triggers are created when you reopen .XML model

Duplicate Triggers are created when you reopen .XML model

Duplicate triggers are created when you save a model as .XML and reopen the same model.

Alter script is not generated in the Alter Script wizard, when an User Defined View is renamed/modified

Alter script is not generated in the Alter Script wizard, when an User Defined View is renamed/modified

When you modify the proprieties of a user-defiend views and skip the User Defined SQL tab, these modification are not displayed in the Alter Script wizard.

PostgreSQL/AlloyDB 1.1: Duplicate Inherited Tables are retrieved after REDB

Duplicate inherit tables are created after reverse engineering from PostgreSQL and AlloyDB 1.1 databases.

Report Designer displays Data Vault objects and properties under the Database for a Logical report type

Report Designer displays Data Vault objects and properties under the Database for a Logical report type

In the Report Editor wizard, the Data Vault objects properties are displayed under the Database for the Logical report type, instead, these should be displayed under the Model. In an usual scenario, the Database objects and properties are not displayed in a Logical report.

Copy-Paste: Renamed column name is migrated as role named column when you copy paste in the PO model

Copy-Paste: Renamed column name is migrated as role named column when you copy paste in the PO model

When you rename the PK column name in the Parent entity, then the migrated column name in the Child entity is not changed. This creates the role name with old column name in the Child entity when you copy the entities from one model and paste it into the PO model.

Model Checkout: Opening a checked out model in Mart displays Read Only error

When you open a checked out model (using Allow Model CheckOut option) from erwin Data Modeler in Mart, this displays a file read-only error.

Denorm:Data loss (Tables are missing) when Denormalize the Parent and child having multi relationships in bidirectional or circular

Tables are missing on the physical side during denormalization when two tables have multiple relationships in a bi-directional or circular manner.

Search Index:REC-Search Index properties are not retrieving from DSE Cassandra database while REC

The Search Index Properties are not being fetched or retained in the RE model, even though the FE Schemas are generated in the database using the FE Wizard; they should be fetched from the database and retained in the reverse-engineered model.

Avro: Norm-De norm: FE: FE script for record containing the array of objects type is syntactically incorrect.

Avro: Norm-De norm: The FE script for the record with the array of objects type is syntactically wrong.

Denorm-CC: Objects are not exported properly from MongoDB model to RDBMS models

Not all objects are exported to the SQL Server model when exporting from the MongoDB model using the CC Wizard, so the SQL Server model doesn't match the one created by changing the

target database.

MITI-JSON models are not Exporting and Importing with MITI bridges

MITI-JSON models are not able to export and import with MITI bridges.

Reporting:Oracle: 'Java' Object displaying in the Report designer for oracle database but its not a valid object

The 'Java' object displayed in the Report Designer for Oracle database is not a valid object.

Korean OS: Korean JSON format file is not opening in Korean OS

The Korean OS is experiencing issues with opening Korean JSON format files.

PostgreSQL 16.x:RES: INDEX: No Syntax error is throwing while performing RES, Index method spgist ASC/DESC options should not set at UI

PostgreSQL 16.x is experiencing syntax errors when performing RES, indicating that the index method spgist ASC/DESC options should not be set at the UI.

JSON:Logical/Physical: The specific Netezza REDB model that is attached is not being obtained as intended on the logical/physical side after being derived to JSON

The Netezza REDB model attached is not showing up correctly on the logical or physical side after being converted to JSON.

PostgreSQL 16.x:RES: Function: Syntax errors while RE from the script

The function is experiencing syntax errors while executing the RE function from the script.

r14.0::PostgreSQL 16.x:REDB: Procedure: SQL body is not retrieving after REDB

The procedure is experiencing issues with the SQL body not being retrieved after REDB.

PostgreSQL 16.x:Alter:Materialized View:No schema generated after removing the Storage parameters

PostgreSQL 16.x: No alter script generated after removing the Storage parameters.

PostgreSQL 16.x:Alter: Tablespace: Script not generated in the alter preview, after removing the tablespace options

The PostgreSQL 16.x version is experiencing an issue where the script is not generated in the alter preview after removing the tablespace options.

When we open the previous version Models the DV Object Attributes not setting any Domain parent and Data Type

The previous version of Models does not set any domain parent and data type when opening the DV Object Attributes.

JSON: Some garbage and extra characters are coming after save as model in JSON format and reopen

The JSON model in r14.0 is experiencing issues with extra characters and garbage after saving and reopening it in JSON format.

DB2 for Zos 13: For Db2 for Zos Certification in create Model, DL, Target DB change, CC and Reporting /13 should be added

For DB2 for z/OS certification, ensure that "12/13" is added in the Create Model, DL, CC, Reporting, Target DB change.

JSON_SaveAs:GBQ:Select statement missing for template_code option in Function\Procedure object

Select statement is missing in Function object under "Template_code" object in .json file model.

Snowflake:REC: A database object is retrieved more times while REDB

Snowflake:REC: A database object is retrieved multiple times during reverse engineering (REDB).

JSON: While Saving and Opening the JSON model, a Progress bar with a color or percentage indication should be displayed

The JSON model should display a Progress bar with a color or percentage indication when saving and opening it.

JSON: New line characters are displaying when we save the model into JSON format and then compare with original model

New line characters are appearing when the model is saved in JSON format and then compared with the original model.

JSON: Foreign Key Constraint Name is retrieved extra in the JSON model when compared with erwin base model

The Foreign Key constraint name is retrieved as an extra entry in the JSON model when compared with the original erwin base model..

JSON: Extra Underscore () is retrieved for Model Shapes and Auto Attached objects in the JSON model when compared with erwin base model

An extra underscore () is retrieved for model shapes and auto-attached objects in the JSON model when compared with the original erwin base model.

JSON: Extra Backslash is retrieved for Quoted words and Spaces are not generated in Comments in the JSON model when compared with erwin base model

The JSON model in Erwin 15.0 retrieves extra backslashes for quoted words and does not generate spaces in comments compared to the base model.

JSON: Disk Volumes ('*') are not retrieved for storage groups in the JSON model when compared with erwin base model

Disk volumes ('*') are not retrieved for storage groups in the JSON model when compared with erwin base model.

JSON: Comments are retrieved extra for Domains, and Table Column Comments in the JSON model when compared with erwin base model

Extra comments are retrieved for domains and table column comments in the JSON model when compared with erwin base model.

JSON: Column Headings are not retrieved in the NSM CSV file in the JSON model when compared with erwin base model

In version 15.0: JSON:

- Column headings are not retrieved in the NSM CSV file when compared with the original erwin base model.
- The order of words in the NSM CSV file differs from that in the erwin base model.
- Additional text is retrieved at the end of the NSM CSV file when compared with the erwin base model.

JSON: Bend Points are not retrieved for Model Shapes in the JSON model when compared with erwin base model

In version 15.0: JSON:

- Bend points are not retrieved for model shapes in the JSON model when compared with the original erwin base model.
- There are CC differences in the parent and child connector points when comparing the JSON model with the erwin base model.

JSON : Opening the JSON file is taking time

The JSON file takes time to open.

Azure DevOps: When Unselecting the "Auto Append" checkbox in the "Commit to Git" dialog, The Alter script file is not replaced in the Local path

Azure DevOps is experiencing issues with the Alter script file not being replaced in the local path when the "Auto Append" checkbox is unchecked in the "Commit to Git" dialog.

Azure Devops: The "Username" and "Password" fields should be disabled or removed for Azure Devops connection in the "Git Connection Manager" dialog

The "Username" and "Password" fields should be disabled or removed for Azure Devops connection in the "Git Connection Manager" dialog to prevent receiving the "Credentials are validated successfully!" message when providing incorrect details.

Azure Devops: Should not be able to place a Cursor in the Greyed out fields i.e., "Git Repository" and "Git Branch" in the 'Commit to Git' wizard

The cursor should not be able to be placed in the greyed out fields, such as "Git Repository" and "Git Branch," in the 'Commit to Git' wizard.

Azure Devops: Proper Tooltip should be displayed when the mouse hovers over the "Git Connections" icon

The tooltip is not properly displayed when the mouse hovers over the "Git Connections" icon.

Azure Devops: FE script is not Overwritten properly in the Local path while trying to save the two different DB FE scripts in one file

Azure DevOps is experiencing issues with the FE script not being properly overwritten in the local path when attempting to save two different DB FE scripts in one file.

PostgreSQL 16.x : RES : TABLE: Not throwing any syntax error while performing RES with OIDS = TRUE

PostgreSQL 16.x is experiencing syntax errors when performing a RES with OIDS = TRUE.

Azure Devops: When Providing Backslash or without Slash in the "Git Path" field, the Git Path name is appended to the File name, and the File is not saved in the Azure Devops

Azure Devops does not save files with a backslash or without a slash in the "Git Path" field.

SQL Server:UI: When we derive the Logical only emovies model to SQL Server. One extra column is added on the physical side of the model.

In the SQL Server UI, deriving the logical-only emovies model adds an extra column to the physical side.

PostgreSQL||REC||The erwin DM application is crashing while performing REC with Materialized View for Automation Database

The erwin DM application crashes when performing reverse engineering (REC) with a Materialized View for an Automation Database.

Fixed Issues

This section includes the list of fixed issues in erwin Data Modeler and erwin Mart Portal 15.0.

Issue Number	Issue Description
02204553	RE during CC from PostgreSQL v. 12.6 gives GDM-33 and GDM-36 errors and also crashes
02205488	Macros expand immediately - should expand when the tab is changed from 'Code' to 'Expanded' tab
02415942	Can't reverse engineer primary keys hive database script
02442110	Snowflake - Table Format for External Tables is not supported
02428091	RE from Oracle results in a crash if Materialized View Index have functions
02484506	Active templates are not applying correctly
02263924	Relationship RI Action changes in 12.5.2
02502826	Reverse engineer Snowflake script fails to gen model on keywords order, noorder, identity, and identifier
02506163	Oracle 12c R2 Infer relationship names reverse engineer crash
02521697	Reverse engineer is generating errors and crashing
02554052	Databricks RE fails on dashes
02531555	Domain in the Oracle model does not display properly in Korean and is converted to strange characters
02577508/02722529	Temporal options don't show columns
02525971	Cannot create DB2 zOS column name greater

Fixed Issues

Issue Number	Issue Description
	than 30 characters
02588691	Reverse engineering an Oracle database, DM throws REP 4 warnings and creates invalid objects
02606053	Datavault pre sets from V12 destroyed on model upgrade to V14
02604959	Datavault pre sets mangle models if altered
02611404	Reverse engineering directly from a PostgreSQL database where a view contains a column name with a space fails
02501417	DB2 Table COMMENTS: Column length exceeded more than 71 characters
02545321	PostgreSQL Function body not delimited - \$BODY\$ Function SQL DM 14.0
02634924	Schemas in the OLD (DM 2020) vs DM V14
02626884	Owner name listed multiple times
02663980	Reverse Engineering from Snowflake DDL fails with error
02665396	Databricks Table blank Option not generated correctly
02649791	Errors during reverse engineer of Postgresql
02626387	Databricks RE requires admin privileges
02687999	Reverse engineering PostgreSql DDL missing comments on Table/Column
02625973	Creating a view syntax it throws error 'Incorrect Factor' translating from Japanese to English
02715025	Hive columns don't get reverse engineered
02701154	RE from View in PostgreSQL erwin closes
02571330	Reverse engineer from Oracle does not import

Fixed Issues

Issue Number	Issue Description
	tables
02642673	MongoDB Array datatype as ObjectID fails on Schema Validator
02713234	JSON Reverse Engineer with wrong Logical Data types
02609351	Issues in Python lib
02735858	Mapping of bit datatype to Boolean when Change target server from sqlserver to MongoDB
02575816	Issues with existing model that has a target DB of DynamoDB (a NoSQL database) to PostgreSQL
02796417	When JSON field Defined as a NUMBER, the "Value" Assigned does not Generate

Third Party Software Acknowledgment

Following are the third party tools used for erwin Data Modeler(erwin DM), erwin Mart Portal, and erwin ER360:

- erwin DM
 - AdoptOpenJDK 11.0.24+8.
 - JRE 11.0.27+6 LTS
 - OpenSSL 3.5.0
- erwin Mart Portal and erwin ER360:
 - Apache Server v2.4.63
 - JDK for erwin Mart Portal: 21.0.7
 - Microsoft .NET Framework 4.7.1
 - OpenSSL 3.1.0.0
 - TLS 1.3